

High Wattage LED Light Engine

Ideal for easy design of lighting application 5W ... 60W
Maxi chips packaged for excellent heat dissipation



5 Watt

DM-C-R14-5 series



DM-C-R14-5

beam angle: 140 deg.

forward current: 400mA max.

Thermal management:

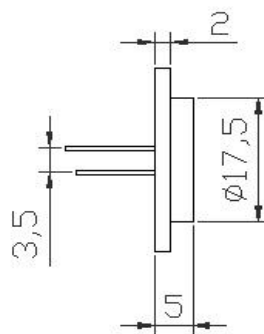
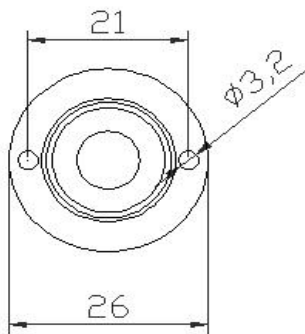
lamp base efficiently drains heat from LED chips.

Secondary heat-sink has to be designed to assure

correct thermal management within system operative limit conditions.

Check performance and stability of total system testing temperature of lamp base when coupled with secondary heat-sink and housing of your fixture.

Be sure that the temperature of lamp base never exceeds 80°C max. value.



dimensions in mm.

Some dimensions are subject to be changed without prior notice. Reconfirm data in case of critical application.

Part Nbr.	Color	Flux(lm)	λD (nm)		VDC			Driver (optional)
			CCT (°K)	min.	Typ.	max.		
DM-C-R14-5R	Red	150	620 nm	8,8	9,1	11,0	PH05400 Ibc 0.4A	
DM-C-R14-5G	Green	150	530 nm	11,0	11,2	11,4		
DM-C-R14-5B	Blue	40	470 nm	10,2	10,4	10,8		
DM-C-R14-5A	Amber	150	590 nm	8,8	9,1	11,0		
DM-C-R14-5W35	Warm White	140	3.500 °K	10,2	10,4	10,8		
DM-C-R14-5W60	White	150	6.000 °K	10,2	10,4	10,8		

High Wattage LED Light Engine

Ideal for easy design of lighting application 5W ... 60W
Maxi chips packaged for excellent heat dissipation



DOMA
LED TECH CO., LTD

5 Watt

DM-C-R10-5 series



DM-C-R10-5

beam angle: 100 deg.

forward current: 400mA max.

Thermal management:

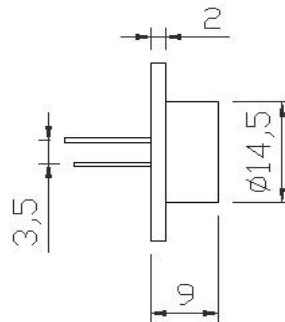
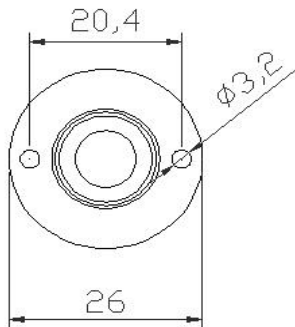
lamp base efficiently drains heat from LED chips.

Secondary heat-sink has to be designed to assure

correct thermal management within system operative limit conditions.

Check performance and stability of total system testing temperature of lamp base when coupled with secondary heat-sink and housing of your fixture.

Be sure that the temperature of lamp base never exceeds 80°C max. value.



dimensions in mm.

Some dimensions are subject to be changed without prior notice. Reconfirm data in case of critical application.

Part Nbr.	Color	Flux(lm)	λD (nm)		VDC			Driver (optional)
			CCT (°K)		min.	Typ.	max.	
DM-C-R10-5R	Red	150	620	nm	8,8	9,1	11,0	PH05400 I _{bc} 0,4A
DM-C-R10-5G	Green	150	530	nm	11,0	11,2	11,4	
DM-C-R10-5B	Blue	40	470	nm	10,2	10,4	10,8	
DM-C-R10-5A	Amber	150	590	nm	8,8	9,1	11,0	
DM-C-R10-5W35	Warm White	140	3.500	°K	10,2	10,4	10,8	
DM-C-R10-5W60	White	150	6.000	°K	10,2	10,4	10,8	

High Wattage LED Light Engine

Ideal for easy design of lighting application 5W ... 60W

Maxi chips packaged for excellent heat dissipation



5 Watt

DM-R-R1609-5 series



DM-R-R1609-5

*beam angle: 160 deg. Horizontal 90 deg. Vertical
forward current: 400mA max.*

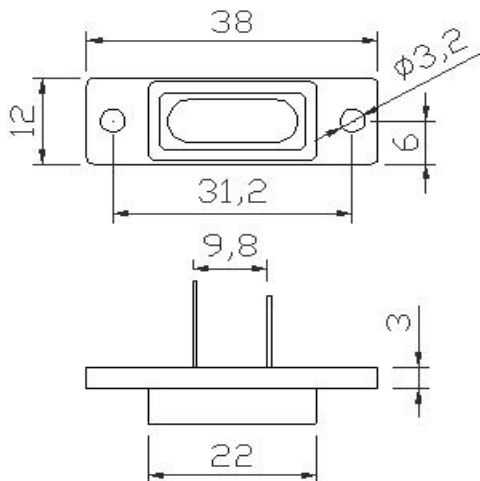
Thermal management:

lamp base efficiently drains heat from LED chips.

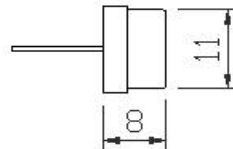
Secondary heat-sink has to be designed to assure correct thermal management within system operative limit conditions.

Check performance and stability of total system testing temperature of lamp base when coupled with secondary heat-sink and housing of your fixture.

Be sure that the temperature of lamp base never exceeds 80°C max. value.



dimensions in mm.



Some dimensions are subject to be changed without prior notice. Reconfirm data in case of critical application.

Part Nbr.	Color	Flux(lm)	λD (nm)		VDC			Driver (optional)
			CCT (°K)	min.	Typ.	max.		
DM-R-R1609-5R	Red	150	620 nm	8,8	9,1	11,0	PH05400 I _{dc} 0.4A	
DM-R-R1609-5G	Green	150	530 nm	11,0	11,2	11,4		
DM-R-R1609-5B	Blue	40	470 nm	10,2	10,4	10,8		
DM-R-R1609-5A	Amber	150	590 nm	8,8	9,1	11,0		
DM-R-R1609-5W35	Warm White	140	3.500 °K	10,2	10,4	10,8		
DM-R-R1609-5W60	White	150	6.000 °K	10,2	10,4	10,8		

AC to DC Constant Current Power Supply

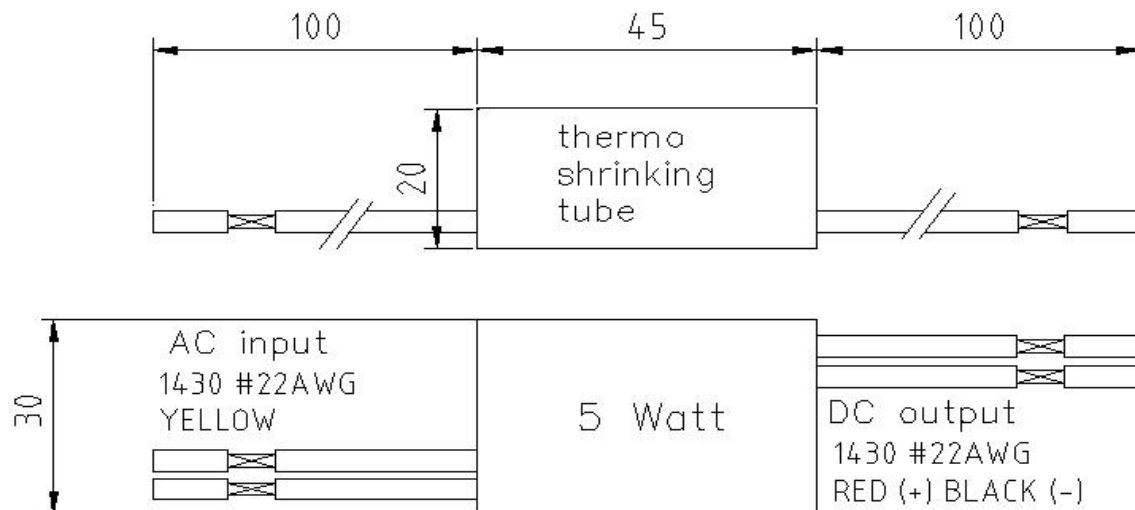
Driver for MLED 5W from city power.

Wide VAC input. VDC output with constant current.



DOMA
LED TECH CO.,LTD

5 Watt LED optimized driver



dimensions in mm.

PH05400 (LA1005-12-C0400)

Constant Current DC Output: **0,4A**



Safety : FCC B - CE

AC Input range: 90~263VAC / 80~40mA / 47~63Hz

Output Isolation : Yes

DC Output: 2~12VDC

Watts: 5W

Crest Factor (Ipk): 1,5 max.

Efficiency : 76% Typical

Operation Temp. : -40°C~+50°C

Storage Temp. : -40°~+85°C

PH05400 is suitable driver for single colour:

DM-C-R10-5xxx

DM-C-R14-5xxx

DM-R-R1609-5xxx